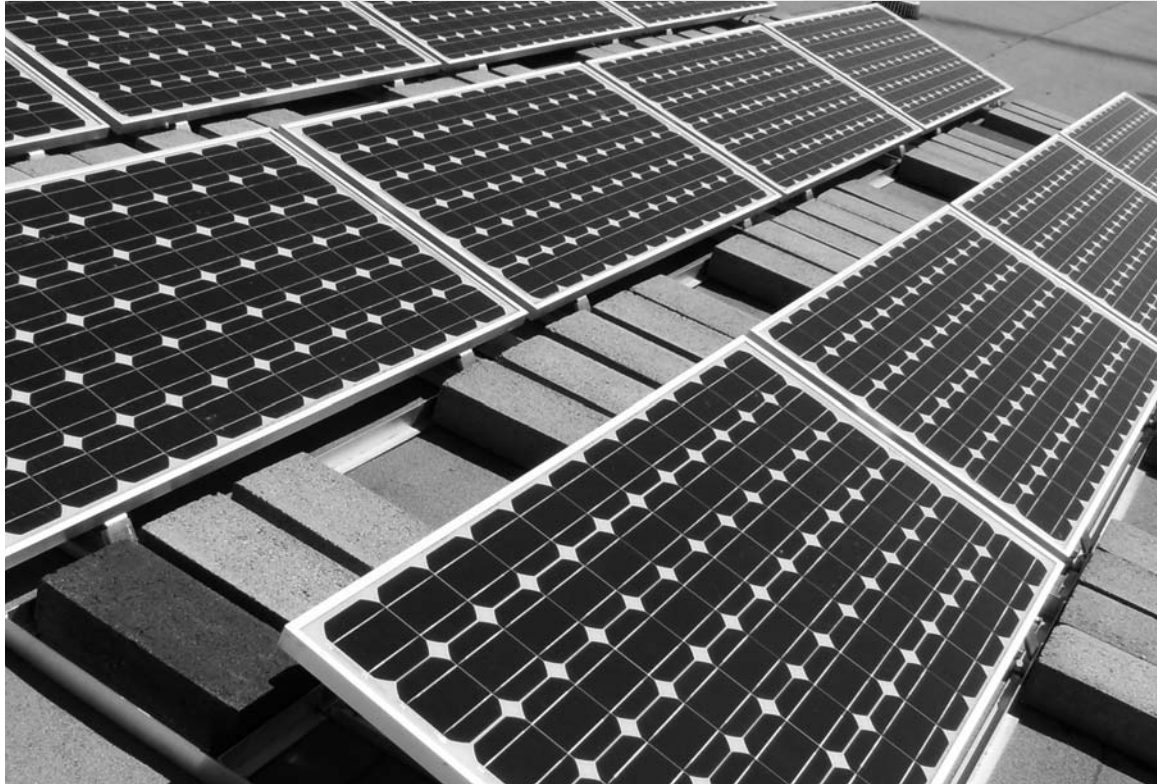


RAPIDRAC G10

Code-Compliant Installation Manual 650



Unirac Code-Compliant Installation Manual

Table of Contents

i. Installer's Responsibilities	2
Part I. Procedure to Determine Wind Design Load	
[1.1.] Using the Analytical Method – ASCE 7-05	3
[1.2.] Procedure to Calculate Design Wind Load	3 - 6
Part II. Load Forces on RapidRac™ G10 Mounting System	7 - 11
Part III. Calculate Ballast / Attachment Requirements due to Uplift Load	12
Part IV. Installing RapidRac™ G10	
[4.1.] Tools Required for Assembly	13
[4.2.] Components List	13
[4.3.] Assembly	14-15
Part V. 10-Year Limited Product Warranty, 5-Year Limited Finish Warranty	16



Pub 090515-2cc
May 2009

i. Installer's Responsibilities

Please review this manual thoroughly before installing your RapidRac™ G10 system.

This manual provides a) supporting documentation for building permit applications relating to Unirac's RapidRac™ G10 ballasted flat-roof photovoltaic racking system and b) planning and assembly instructions for RapidRac™ G10.

RapidRac™ G10 products, when installed in accordance with this bulletin, will be structurally adequate and will meet the structural requirements of the IBC 2006, , ASCE 7-05, and California Building Code 2007 (collectively referred to as "the Code"). Unirac also provides a limited warranty on RapidRac™ G10 products (p. 22).

RapidRac™ G10 is much more than a product. It's a flat roof solution that accommodates a wide range of modules, providing customers with flexibility & options.

Minimal parts, faster installation, reduced labor expenses and versatility; all customer-driven demands that helped engineer this unique flat roof solution.

It's accompanied by a technical support system that provides this complete installation and code compliance documentation, an on-line Estimator and design assistance to help you solve the toughest challenges.



The installer is solely responsible for:

- Complying with all applicable local or national building codes, including any that may supersede this manual;
- Ensuring that Unirac and other products are appropriate for the particular installation and the installation environment;
- Ensuring that the roof, its rafters, connections, and other structural support members can support the array under all code loading conditions (this total building assembly is referred to as the building structure);
- Using only Unirac parts and installer-supplied parts as specified by Unirac (substitution of parts may void the warranty and invalidate the letters of certification in all Unirac publications);
- Ensuring the fasteners used in the attachment of the racking to the building structure have adequate pullout strength and shear capacities as installed;
- Maintaining the waterproof integrity of the roof, including selection of appropriate flashing;
- Ensuring safe installation of all electrical aspects of the PV array; and
- Ensuring correct and appropriate design parameters are used in determining the design loading used for design of the specific installation. Parameters, such as snow loading, wind speed, exposure, and topographic factor should be confirmed with the local building official or a licensed professional engineer.

Part I. Procedure to Determine the Design Wind Load

[1.1.] Using the Analytical Method - ASCE 7-05

The procedure to determine Design Wind Load is specified by the American Society of Civil Engineers (ASCE) and referenced in the International Building Code (IBC) 2006. For purposes of this document, the values, equations, and procedures used in this document reference ASCE 7-05, Minimum Design Loads for Buildings and Other Structures. Please refer to ASCE 7-05 if you have any questions about the definitions or procedures presented in this manual. If your installation is located outside the United States, consult your local Unirac distributor or your local building authority.

The wind force analysis is based on ASCE 7-05, Chapter 6. Upon review of the different methods available for calculating wind loading, it has been determined that Method 2 (Analytical Procedure) is most appropriate. Specifically Section 6.5.13 (Design Wind Loads on Open Buildings with Mono sloped, Pitched, or Troughed Roofs), was selected as the method most closely approaching the application of Unirac's RapidRac™ G10 racking system. The pressures are determined following Section 6.5.13.2 (Main Wind-Force Resisting System) according to the following formula:

$$p = q_h \times G \times C_n \quad \text{Equation 1}$$

where

p = design wind pressure (+ denotes down towards the roof)

q_h = velocity pressure evaluated at mean roof height

G = gust effect factor as determined in ASCE 7-05 Section 6.5.8

C_n = net pressure coefficient determined from ASCE 7-05 Fig. 6-18A, p. 66.

You will also need to determine the following information:

- Basic Wind Speed, V (mph), the largest 3 second gust of wind in the last 50 years
- Total roof height, h (ft)
- Effective Wind Area (ft^2) = minimum total continuous area of modules being installed
- Roof Zone = the area of the roof you are installing the PV system
- Roof Zone Setback Length, a (ft)
- Roof Pitch (degrees)
- Exposure Category.

[1.2.] Procedure to Calculate Design Wind Load

The procedure for determining the Design Wind Load can be broken into steps that include looking up several values in different tables.

Step 1: Determine Basic Wind Speed, V (mph)

Determine the Basic Wind Speed, V (mph), by consulting your local building department or locating your installation on the map in Figure 1, p. 4.

Step 2: Determine Roof/Wall Zone

The Design Wind Load will vary based on where the installation is located on a roof. RapidRac™ G10 mounting systems may be located in more than one roof zone.

Using Table 1, determine the Roof Zone Setback Length, a (ft), according to the width and height of the building on which you are installing the PV system.

Determine in which roof zone your PV system is located, Zone 1, 2, or 3 according to Figure 2.

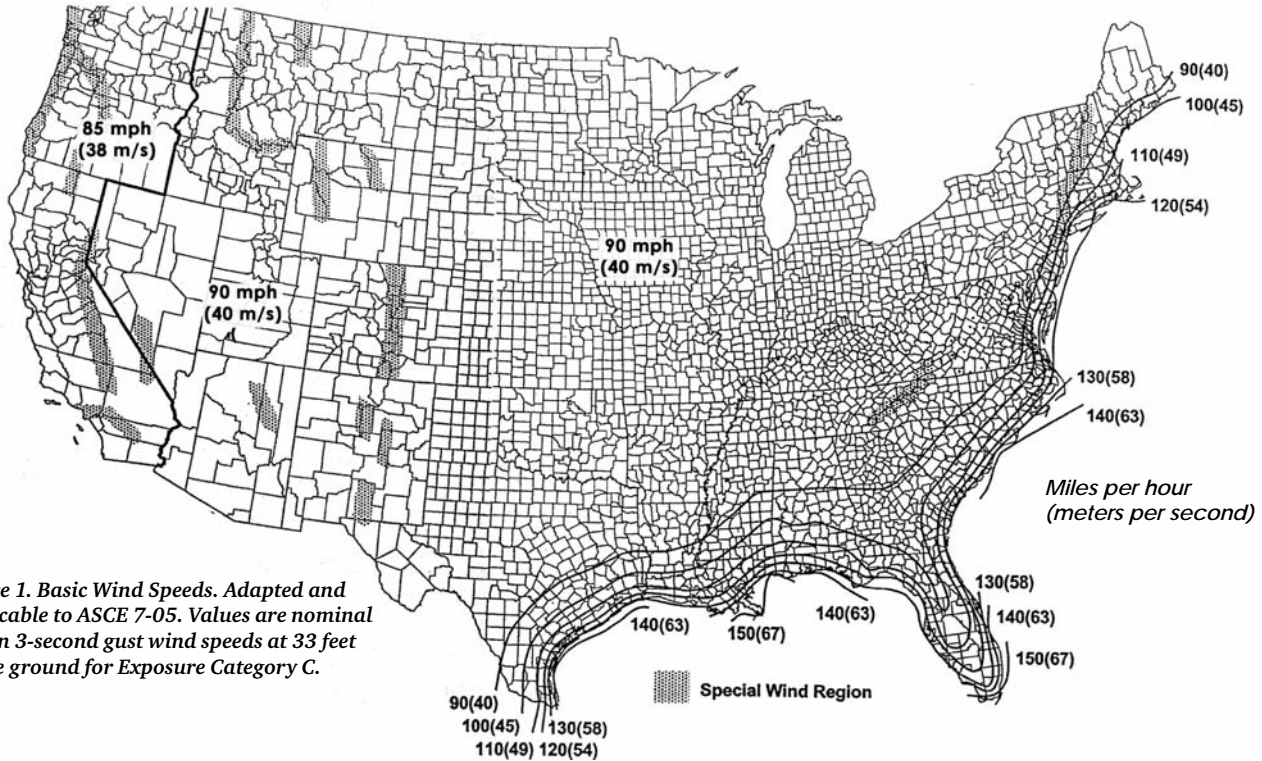


Figure 1. Basic Wind Speeds. Adapted and applicable to ASCE 7-05. Values are nominal design 3-second gust wind speeds at 33 feet above ground for Exposure Category C.

Table I. Determine Roof/Wall Zone, length (a) according to building width and height

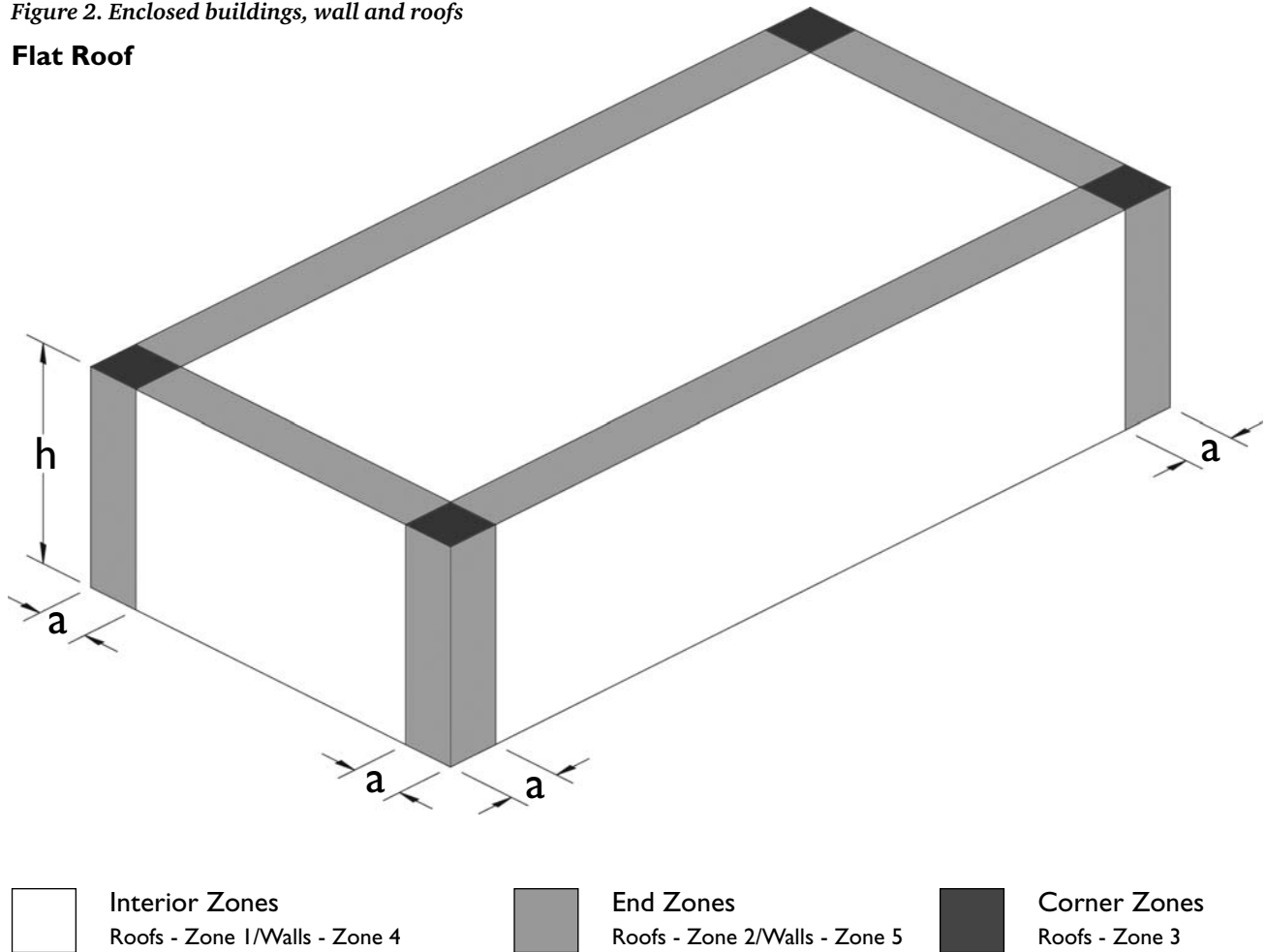
a = 10 percent of the least horizontal dimension or 0.4h, whichever is smaller, but not less than either 4% of the least horizontal dimension or 3 ft of the building.

Roof Height (ft)	Least Horizontal Dimension (ft)																		
	10	15	20	25	30	40	50	60	70	80	90	100	125	150	175	200	300	400	500
10	3	3	3	3	3	4	4	4	4	4	4	4	5	6	7	8	12	16	20
15	3	3	3	3	3	4	5	6	6	6	6	6	6	6	7	8	12	16	20
20	3	3	3	3	3	4	5	6	7	8	8	8	8	8	8	8	12	16	20
25	3	3	3	3	3	4	5	6	7	8	9	10	10	10	10	10	12	16	20
30	3	3	3	3	3	4	5	6	7	8	9	10	12	12	12	12	12	16	20
35	3	3	3	3	3	4	5	6	7	8	9	10	12.5	14	14	14	14	16	20
40	3	3	3	3	3	4	5	6	7	8	9	10	12.5	15	16	16	16	16	20
45	3	3	3	3	3	4	5	6	7	8	9	10	12.5	15	17.5	18	18	18	20
50	3	3	3	3	3	4	5	6	7	8	9	10	12.5	15	17.5	20	20	20	20
60	3	3	3	3	3	4	5	6	7	8	9	10	12.5	15	17.5	20	24	24	24

Source: ASCE/SEI 7-05, Minimum Design Loads for Buildings and Other Structures, Chapter 6, Figure 6-3, p. 41.

Figure 2. Enclosed buildings, wall and roofs

Flat Roof



Source: ASCE/SEI 7-05, Minimum Design Loads for Buildings and Other Structures, Chapter 6, p. 41.

Step 3: Determine the Topographic Factor, K_{zt}

For the purposes of this code compliance document, the installation is assumed to be on level ground (less than 10% slope), which means the Topographic Factor, K_{zt} , would equal 1. If the installation is not on level ground, please consult ASCE 7-05, Section 6.5.7 and the local building authority to determine the Topographic Factor.

Step 4: Determine Exposure Category (B, C, D)

Determine the Exposure Category by using the following definitions for Exposure Categories.

The ASCE/SEI 7-05* defines wind exposure categories as follows:

EXPOSURE B is urban and suburban areas, wooded areas, or other terrain with numerous closely spaced obstructions having the size of single family dwellings.

EXPOSURE C has open terrain with scattered obstructions having heights generally less than 30 feet. This category includes flat open country, grasslands, and all water surfaces in hurricane prone regions.

EXPOSURE D has flat, unobstructed areas and water surfaces outside hurricane prone regions. This category includes smooth mud flats, salt flats, and unbroken ice.

Also see ASCE 7-05 pages 287-291 for further explanation and explanatory photographs, and confirm your selection with the local building authority.

Step 5: Determine the Topographic Factor, K_z

Determine K_z from the table below based on the exposure category and building height.

Step 6: Determine Wind Directionality Factor, K_d

The wind directionality factor, K_d , is determined to be 0.85 according to ASCE 7-05 Table 6-4, pg. 80.

Step 7: Determine the Importance Factor, I

The importance factor, I , is determined to be 0.87, according to ASCE 7-05, Table 6-1, p. 77, using the building category found in Table 1-1, p. 3.

Step 8: Calculate the Velocity Pressure due to Wind, q_h

From Chapter 6 of ASCE 7-05, Section 6.5.10, the velocity pressure due to wind, q_h , is calculated as follows:

$$q_z = q_h = 0.000256 \times K_z \times K_{zt} \times K_d \times V^2 \times I \quad \text{Equation 3}$$

where

q_h (psf) = Velocity Pressure due to wind

K_z = Adjustment Factor for Building Height and Exposure Category

K_{zt} = Topographic Factor = 1

K_d = Directionality Factor

V = Basic Wind Speed

I = Importance Factor.

With the factors that are always constant accounted for, velocity pressure, q_h is determined as follows:

$$q_h = 0.0019 \times K_z \times V^2 \quad \text{Equation 4}$$

Step 10: Determine the Gust Effect Factor, G

The gust factor, G , is determined to equal 0.85, according to Equation 1, then going to ASCE 7-05 Section 6.5.8.1, and using the structure definition from ASCE 7-05, Section 6-2.

Step 11: Determine the Net Pressure Coefficient, C_n

Finally, from Equation 1, the net pressure coefficient, C_n , can be determined from ASCE 7-05 Fig. 6-18A, p. 66. The C_n values are based on clear, not obstructed, flow as wind tunnel tests have determined for the RapidRac™ G10. As RapidRac™ G10 is only available at a fixed tilt angle of 10 degrees, the pressure coefficients calculated are the linearly interpolated values between 7.5 and 15 degrees. Performing the calculations, the maximum uplift and the maximum down force are, respectfully:

$$C_n = (-0.9)$$

$$C_n = (1.28)$$

The C_n values from ASCE 7-05, Figure 6-18D (wind force in the X-direction) will not control.

Step 12: Calculate the Design Wind Load, p (psf)

Multiply the Velocity Pressure, q_h , in Step 9 by the Gust Effect Factor in step 10 and the Net Pressure Coefficient in step 11 using the following equation:

$$p = q_h \times G \times C_n \quad \text{Equation 5}$$

where

p = Design Wind Load (10 psf minimum)

q_h (psf) = Velocity Pressure (psf)

G = Gust Effect Factor

C_n = Net Pressure Coefficient (Fig. 6-18A).

The Design Wind Load will be used in Part III to select the appropriate ballast.

Part II. Load Forces on RapidRac™ G10 Mounting System

Step 1: Calculate Wind Load Forces

For purposes of this analysis the Uplift and Down force wind loads = WLu and WLd respectively:

- $WLu = \text{Uplift Wind Load (psf) (negative value in p calculation)}$
- $WLd = \text{Downforce Wind Load (psf) (positive value in p calculation)}$

Apply Wind Load to photovoltaic module area to calculate Wind Load Force per module in uplift and downforce cases.

- $Wu = \text{Module Area} \times WLu \text{ (negative value per the sign convention)}$
- $Wd = \text{Module Area} \times WLd \text{ (positive value per the sign convention)}$

The uplift and downforce wind pressures apply to the lift surfaces. The lift surfaces are the area of the photovoltaic module projected onto the X-Y (for lift) plane and the Z-X (for drag) plane.

These forces can then be calculated as follows:

- $Wzu = \text{Uplift wind load force in Z direction}$
- $Wzu = Wu \text{ COS}(10^\circ)$
- $Wyu = \text{Uplift Wind Load in Y Direction (or Drag)}$
- $Wyu = Wu \text{ SIN}(10^\circ)$
- $Wzd = \text{Downforce Wind Load Force in Z Direction}$
- $Wzd = Wd \text{ COS}(10^\circ)$
- $Wyd = \text{Downforce Wind Load Force in Y Direction}$
- $Wyd = Wd \text{ SIN}(10^\circ)$

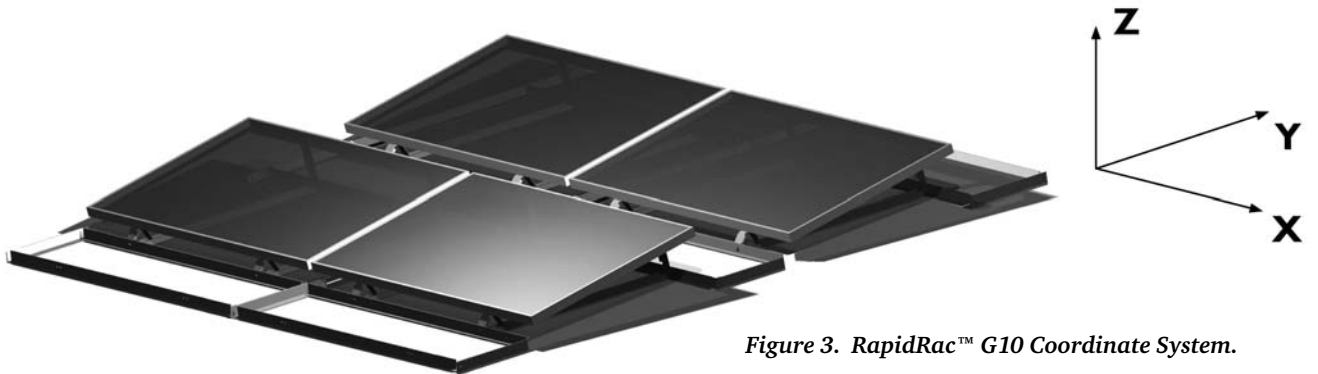


Figure 3. RapidRac™ G10 Coordinate System.

Step 2. Calculate Snow Load

Chapter 7 of ASCE 7-05 addresses snow loading Unirac utilizes the same methodology and charts to determine snow loading forces on the RapidRac™ G10 structure.

Snow loads act on the horizontal projection of the photovoltaic module onto the roof. Since there are no uplift cases for snow load and there are also no snow loads in the y or x directions, the snow force in the downward direction is calculated as follows:

$$SL = Sg \text{ COS}(10^\circ)$$

where

$S = \text{Snow force in the downward direction.}$

To determine the snow load force per module, SLF (lbs), multiply the Roof Snow Load, SL (psf) by the photovoltaic module area (sf).

$$SLF = SL \times \text{Module Area}$$

Step 3. Apply Load Combinations

From Chapter 2 of ASCE 7-05, section 2.4.1, several load combinations must be considered in the development of the maximum design forces. These forces will be used to compare to the appropriate allowable stresses. The load forces calculated below on a per module basis.

$$\text{Load Combination 1, LC1} = D1 + S$$

$$\text{Load Combination 2, LC2} = D1 + W$$

$$\text{Load Combination 3, LC3} = D1 + 0.75 S + 0.75 W$$

$$\text{Load Combination 4, LC4} = 0.6 D1 + W$$

where

D1 = Dead Load 1 (the weight of the photovoltaic modules and the racking materials)

S = Snow Load

W = Wind Load

Dead Load 1, D1, does not include ballast weight from cinder blocks.

Step 3.1 Z Direction Load Combination, Downforce

To calculate the downforce on the RapidRac™ G10 structure, the downforce wind load in Z direction (Wzd) is applied in the wind load combination equations 1, 2, and 3 above.

The design downforce is taken from the maximum value calculated from the load combination equations. This will be called the Downforce Design Load Force in Z direction, DFz.

Z direction loads are applied to RapidRac™ G10 racking system through the front and rear brackets. The RapidRac™ G10 system has only one configuration. Module brackets are located symmetrically in both x and y axis.

DFz / 4 = Negative Z Direction Force in each RapidRac G10 Module Bracket

DFz / 4 Z = Downforce in Z direction

DFz / 4 < 400 lbs (rear bracket allowable from testing)

DFz / 4 < 620 lbs (front bracket allowable from bolt shear published value)

Step 3.2 Z Direction Load Combination, Uplift

To determine the uplift wind load in Z direction (Wzu), Load Combination Equation 4 must be used as this is the only load combination with uplifting components.

UFz = Uplift Design Load in Z direction

UFz = Load Combination 4.

Since each module is supported by four brackets,

UFz / 4 = Positive Z Direction Force in each RapidRac™ G10 Module Bracket = UFz / 4.

UFz / 4 < 1240 lbs (rear bracket allowable tensile force from allowable bolt shear published value)

Step 3.3 Y Direction Load Combinations

Load combinations do not apply in x or y directions for downforce or uplift. Forces in the X direction are forces expected from a seismic event. Forces in the Y direction are forces expected from a seismic event and along with drag forces, and are defined in Step 1.

Y direction loads are applied to the RapidRac™ G10 racking system through the front and rear brackets. The RapidRac™ system has only one configuration. Module brackets are located symmetrically in both x and y axis. The resulting allowable force is:

DFy = Shear in module brackets

DFy < 620 lbs. (single bolt shear in upper connection)

UFy / 2 = Uplift in Y direction force in each RapidRac™ G10 module bracket = .

UFy / 2 < 2068 lbs (front bracket allowable tensile force from allowable bolt tensile force published value)

Step 3.4 X Direction Load Combinations

Forces in the X direction will never be controlling for wind and snow loads. Seismic Loads will be controlling. Use the following Seismic Load Combination:

$$\text{Load Combination 5, LC5} = D + 0.7 E$$

The dead load in the X and Y Directions is equal to zero. Therefore Load Combination 5 (LC5) is:

$$\text{LC5} = 0.7 E$$

Seismic loading is calculated in Part IV.

Step 4. Determine Ballast Requirements due to Uplift Wind Forces

RapidRac G10 is designed to be a ballasted roof mount system. Ballast blocks are used to weigh down the array to counteract wind forces in the Z and Y direction. To determine the amount of required ballast both uplift in the Z direction and drag in the Y direction must be considered.

Ballast Weight Requirements per Module in the Z Direction.

The ballast weight requirement per module in the Z Direction is equal to Load Combination 4, UFz from Step 3.2.

This ballast value applies to all modules located in roof zone 1. For any modules that are positioned in roof zone 2 or 3, the appropriate roof zone factor from the components and cladding section of the code must be applied to the ballast requirements in those zones respectively.

Ballast Weight Requirements per Module in the Y Direction (Drag Forces)

The uplift wind force condition will control in all cases in the Y Direction. The normal force due to the sum of Dead Load 1, D1 and the Ballast Weight Requirement per module in the Y Direction, multiplied by the assumed coefficient of friction must resist the uplift wind force in the Y Direction, UFy. Following the prescribed method for load combinations in ASCE 7-05, the Dead Load Force 1, DLF1, must be multiplied by a factor of 0.6.

$$(0.6 \times \text{DLF1} + \text{BW}_y) \times 0.4 = \text{UF}_y$$

Rearranging this equation yields the Ballast Weight Requirement in the Y Direction

$$\text{BW}_y = \text{UF}_y / 0.4 - 0.6 (\text{DLF1})$$

The Code Calculated Ballast Weight Requirement per module is the sum of the Ballast Weight Requirement per module in the Z Direction and the Ballast Weight Requirement per module in the Y Direction.

$$\text{BW}_c = \text{BW}_z + \text{BW}_y$$

The result of the Code Calculated Number of Ballast Blocks per module must be adjusted based on extensive wind tunnel testing completed by Unirac. The adjustment factor to correlate the Code Calculations to the wind tunnel results is 0.434. Multiplying the Code Calculated Ballast Weight Requirement per Module by the Wind Tunnel Adjustment Factor yields the Ballast Weight Requirement per module at equilibrium, BWe.

$$0.434\text{BW}_c = \text{BWe}$$

The Ballast Weight Requirement per module at equilibrium must be multiplied by the Factor of Safety. Unirac has determined 1.5 to be the appropriate Factor of Safety. The product of the Ballast Weight Requirement per module at equilibrium and the Factor of Safety in the Recommended Ballast Weight Requirement per module.

$$1.5\text{BWe} = \text{BWr}$$

Calculate the Number of Ballast Blocks per Module

The number of ballast blocks per module equals the sum of the Ballast Weight Requirement per module in the Z Direction and the Ballast Weight Requirement per module in the Y Direction divided by the weight per block.

Unirac has designed RRG10 to accept standard “Cap Blocks” with the dimensions of 4”X8”X16” and having a weight of 26 lb. RRG10 ballast requirements assume the use of these blocks for ballast.

$$(\text{BW}_z + \text{BW}_y) / 26 = \text{ASCE 7-05 Code Calculated Number of Ballast Blocks per Module}$$

The number of ballast blocks per module to resist uplift must be rounded up.

Please note that the recommended number of ballast blocks per module must be reduced to eliminate shading on the photovoltaic modules. RapidFoot Attachments can be added in order to reduce ballast requirements. Refer to the section on the affect of attachments on ballast requirements for more information.

Step 5. Calculate Dead Load Realized by Substructure

The dead load realized by the substructure is the dead load of the racking and modules and the total ballast required distributed over the entire foot print of the array.

$$\text{DL2} = (\text{D1} + \text{Total Ballast Weight}) / (\text{Array Width} \times \text{Array Length})$$

where

$$\text{D2} = \text{dead load realized by substructure (psf)}$$

Step 6. Calculate Seismic Load

If you are installing the RapidRac™ G10 system in a seismic zone, Unirac recommends a positive attachment to the roof structure. The seismic attachment recommendations come from ASCE 7-05, Chapter 15- “Seismic Design Requirements for Non-Building Structures”.

Seismic resistance calculations are based on ASCE 7-05, Chapter 15, Section 15.1.3, which refers to ASCE 7-05 Chapter 12, Section 12.8- the “Equivalent Lateral Force Procedure”, used in this manual. Equation 12.8-1 from this chapter of ASCE 7-05 defines the “Seismic Base Shear”:

$$V = C_s \times W \quad \text{Equation 12.8-1}$$

where

$$V (\text{lbf}) = \text{Seismic Base Shear}$$

$$C_s = \text{the seismic response coefficient (ASCE 7-05, Section 12.8.1.1)}$$

$$W = \text{the effective seismic weight (ASCE 7-05, Section 12.7.2)}$$

Per ASCE 7-05, Section 12.8.1.1:

$$C_s = \text{SDS} / (R / I) \quad \text{Equation 12.8-2}$$

where

$$\text{SDS} = \text{the design spectral response acceleration parameter in the short period range as determined from ASCE 7-05, Section 11.4.4}$$

$$R = \text{the response modification factor in ASCE 7-05, Table 12.2-1}$$

$$I = \text{the importance factor determined in accordance with ASCE 7-05, Section 11.5.1}$$

Per ASCE 7-05, Section 11.4.4:

$$SDS = (2/3) \times SMS \quad \text{Equation 11.4-3}$$

where

SMS = the Maximum Considered Earthquake (MCE), 5% damped, spectral response acceleration parameter at a period of 1 second as defined in ASCE 7-05, Section 11.4.3

Per ASCE 7-05, Section 11.4.3:

$$SMS = Fa \times Ss \quad \text{Equation 11.4-1}$$

where

Fa = a site coefficient (ASCE 7-05, Table 11.4-1)

Ss = the mapped MCE spectral response acceleration at short periods as determined in accordance with ASCE 7-05, Section 11.4.1

To determine Ss, ASCE 7-05, Figs. 22-1 through 22-14 must be consulted. These tables give the “MCE Ground Motion” by region as a factor of g’s (gravitational acceleration). Upon examination of these figures it can be seen that even for earthquake prone regions, with very few exceptions, an Ss of 2.0 is equal to or greater than the Ss related to almost all possible locations. Unirac’s RapidRacTM G10 Ballasted System seismic attachment requirements are based on using a Ss of 2.0. If it is desired to use a more precise Ss for your location, ASCE 7-05 figures can be used to determine the Ss for the installation site.

Using Ss of 2.0, the site coefficient Fa, can be determined from ASCE 7-05, Chapter 11, Table 11.4-1, determining a site class. Using ASCE 7-05, Chapter 11, Section 11.4.2, site class is determined by the soil properties of the particular installation site. Note that Section 11.4.2 states “Where the soil properties are not known in sufficient detail to determine the site class, Site Class D shall be used unless the authority having jurisdiction on geotechnical data determines Site Class E or F soils are present at the site”. Site Class D is used for these seismic calculations. Consult a local engineer if you would like to determine your actual Site Class.

Using an Ss of 2.0 and a Site Class of D in Table 11.4-1, Fa equals 1.0. Substituting these values in Equation 11.4.1 provides the following:

$$SMS = Fa \times Ss = 2.0 \times 1.0 = 2.0.$$

Substituting into Equation 11.3.1 provides the following:

$$SDS = (2/3) \times SMS = 1.33.$$

For the seismic response coefficient (Equation 12.8-2): Cs = SDS / (R / I), the values for R and I are needed. As noted previously, R equals the response modification factor in ASCE 7-05, Table 12.2-1. Upon review of Table 12.2-1, the closest description to the RapidRacTM G10 Racking System is case H: “Steel Systems Not Specifically Detailed for Seismic Resistance Excluding Cantilever Column Systems”. Though RapidRacTM G10 is not a steel structure, this is the closest representation of RapidRacTM G10, and using Case H yields a relatively conservative value for the Response Modification Factor. Therefore R = 3 from Table 12.2-1.

The occupancy importance factor, I, is determined in accordance with ASCE 7-05, Section 11.5.1 and Table 1-1. The best description of the RapidRacTM G10 structure falls into Occupancy Category 1. Using this value in Table 11.5-1, I equals 1.0.

Solving for equation 12.8-2,

$$Cs = SDS / (R / I) = 1.33 / (3 / 1.0) = 0.443.$$

Determining the seismic base shear (equation 12.8-1) requires the effective seismic weight W; (ASCE 7-05, Section 12.7.2). From Section 12.7.2, the total dead load of the array is all that must be considered, therefore DL2 equals the total dead load calculated in Step 5 above. Substituting into equation 12.8-1:

$$V = Cs \times W = 0.443 \times W$$

Unirac recommends a factor of safety of 1.5, therefore seismic resistance force is determined by the following equation:

$$E = 1.5 \times 0.443 \times D2 = 0.665 \times D2.$$

Step 7. RapidFoot Attachment Requirements due to Forces in X Direction

The number of RapidFoot attachments = LC5 / Allowable Lateral Force for RapidFoot Attachment

Affect of Attachments on Ballast Requirements

Ballast can be reduced by adding attachments. RapidFoot attachments have an allowable uplift design load Force in the Z direction of 1200 lbs.

URFz = total uplift force resisted by RapidFoot = number of RapidFoot attachments × 1200 lbs.

Wb, revised = Total ballast weight - URFz

Wb, module = the revised ballast weight requirement per module = Wb, total / number of modules.

The Revised Ballast Weight Requirement per module must be rounded up.

Step 8. Location for RapidFoot Attachment with Respect to Wind Load and Seismic Load Forces in the X and Y Directions

The placement of RapidFoot attachments with regard to connection strength is an important consideration. Each ballast frame can resist a maximum allowable uplift force of 1240 lbs.

The uplift design load force in the Z Direction per module must be less than the allowable uplift force per ballast frame and the allowable uplift force of RapidFoot. The following inequality will determine the placement of RapidFoot Attachments.

$$URFz \times \text{Number of Modules per RapidFoot} < 1200 \text{ lbs}$$

The controlling design consideration for the location of RapidFoot attachments with respect to wind load is the wind load forces in the Z direction.

The maximum allowable uplift load force in the Z Direction is 1240 lbs with respect to the ballast frame to rail bracket attachment. The maximum allowable uplift force in the Z direction for RapidFoot is 1200 lbs. The RapidFoot attachment is the controlling condition.

The allowable lateral load force in the X direction is 1240 lbs with respect to the ballast frame to rail bracket attachment. The allowable lateral load force in the X and Y directions for RapidFoot is 1200 lbs. The RapidFoot attachment will be the controlling condition.

The following guidelines must be observed in locating RapidFoot attachments in each array:

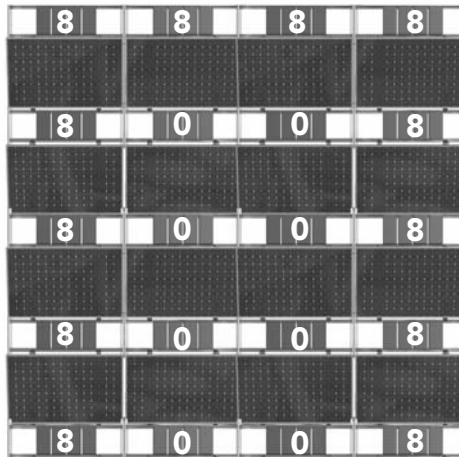
1. The tributary load due Seismic or Uplift Wind Load Force must be less than 1200 lbs.
2. Locate RapidFoot Attachments symmetrically about the x and y axis.
3. Locate RapidFoot Attachments one ballast frame in from the perimeter of the array, not at the exterior ballast frame of the perimeter.
4. For arrays that have greater than 3 modules in the x or y direction, one RapidFoot must be located toward each corner of the array, while also observing Guidelines 1, 2, and 3.
5. For irregularly shaped arrays, locate one RapidFoot at the end of each appendage, observing Guidelines 1, 2, 3, and 4.

Part III. Ballast Distribution Requirements

Step 1. Distribution of Ballast Blocks over the Array

Unirac has designed the RapidRac™ G10 system to take advantage of the large array wind effect, which lightens the overall ballast requirements while remaining strong and safe in the areas most effected by the wind. The areas that see the highest lift due to winds are the east, north, and west perimeters of any array. For this reason, Unirac recommends ballast distribution that is biased towards these three perimeters. Ballast distribution for the RapidRac™ G10 system is specified such that the entire arrays ballast is determined and the average number of ballast blocks is calculated for each module in the array. This number is then multiplied by a factor of 1.5 for the east, north, and west perimeter modules (rounded up to the next whole block). The remaining blocks are then distributed evenly between the remaining interior modules.

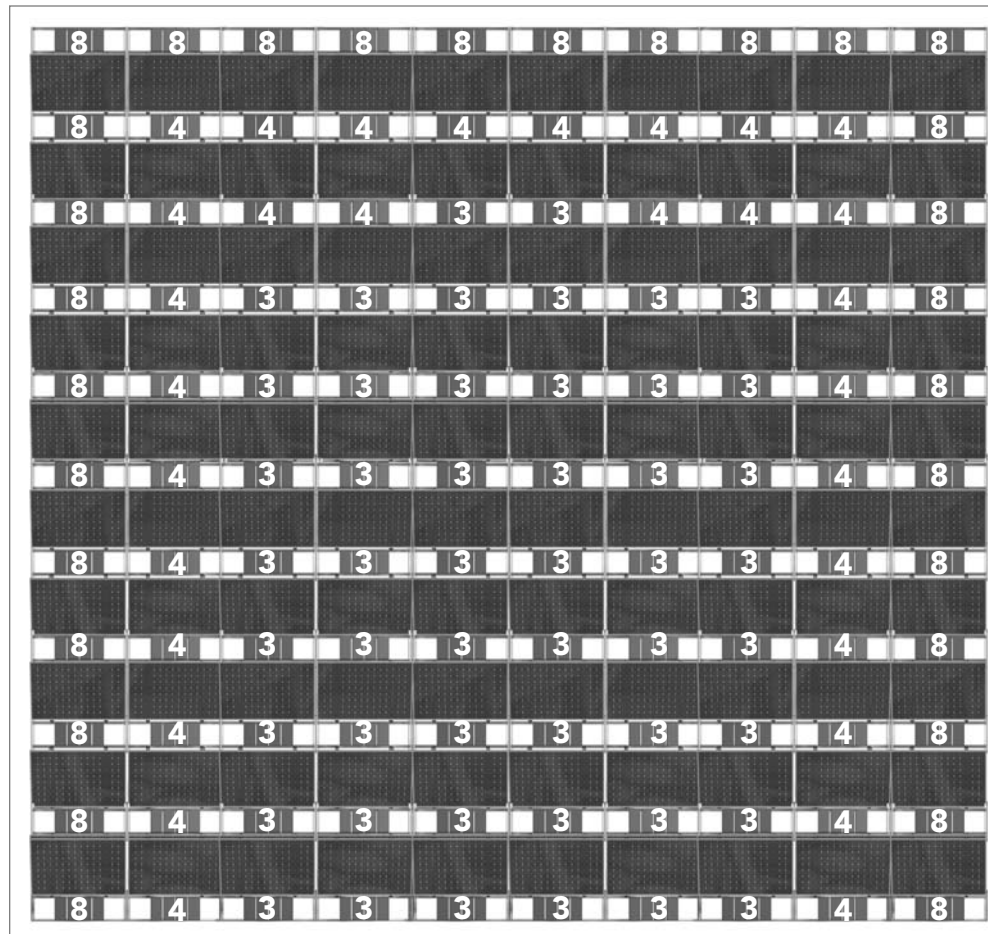
These examples presume that no modules are located in roof zones 2 or 3. If modules were located in those roof zones, the appropriate "External Pressure Coefficients" as defined in ASCE 7-05, Fig. 6-17 would need to be applied to the modules in those zones respectively. The resulting ballast requirements would then be met with either the addition of ballast blocks or the use of an attachment allowance using the RapidFoot attachment method outlined in the RapidFoot Installation Manual.



Example 1: 5 by 5 module array with 5 wide by 6 deep bay frames

For the purposes of illustration, consider that the array wind calculations determine that this array requires an average of five ballast blocks per module. The total number of ballast blocks for this array would be $16 \times 5 = 80$. Eighty ballast blocks would ensure the appropriate safety factor and that the array would be secure on the roof. The first step in distributing the ballast would be to apply 8 ballast blocks ($5 \times 1.5 = 7.5$ rounded to 8) to the 4 east, 4 north and 4 west perimeter bay frames. This is a total of 96 ballast blocks.

Even though this exceeds the total for the array, the methodology should hold. The final result is: 8 ballast blocks in each of 12 perimeter bay frames and 0 in each of 8 interior bay frames.



Example 2: 10 by 10 array with 10 wide by 11 deep bay frames.

For the purposes of illustration, use the same average of five ballast blocks per module as in example 2. The total number of ballast blocks for this array would be $100 \times 5 = 500$. The first step in distributing the ballast would be to apply 8 ballast blocks ($5 \times 1.5 = 7.5$ rounded to 8) to the 10 east, 10 north and 10 west perimeter bay frames. This is a total of 240 ballast blocks leaving a balance of 260 ballast blocks for the remaining 80 interior bay frames with 20 bay frames having 4 blocks and 60 bay frames having 3 blocks. The interior ballast blocks should be distributed in a concentric ring pattern as shown.

Part IV. Installing RapidRac™ G10

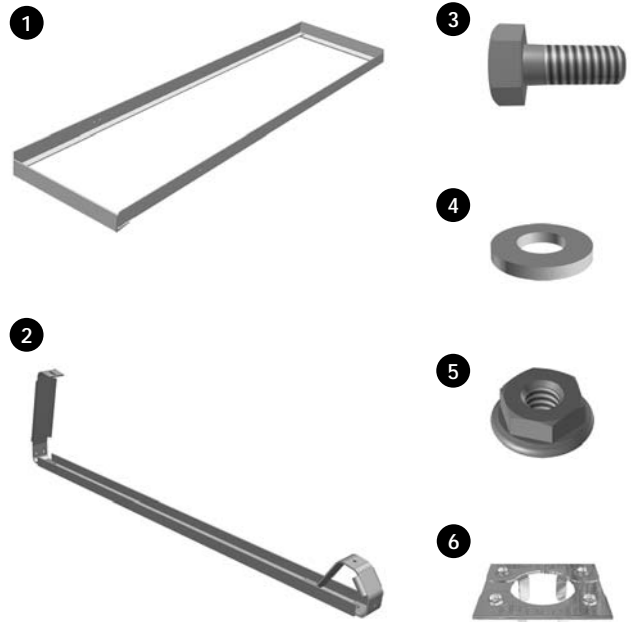
[1.] Tools required for assembly



7/16 Wrench

[2.] Components list

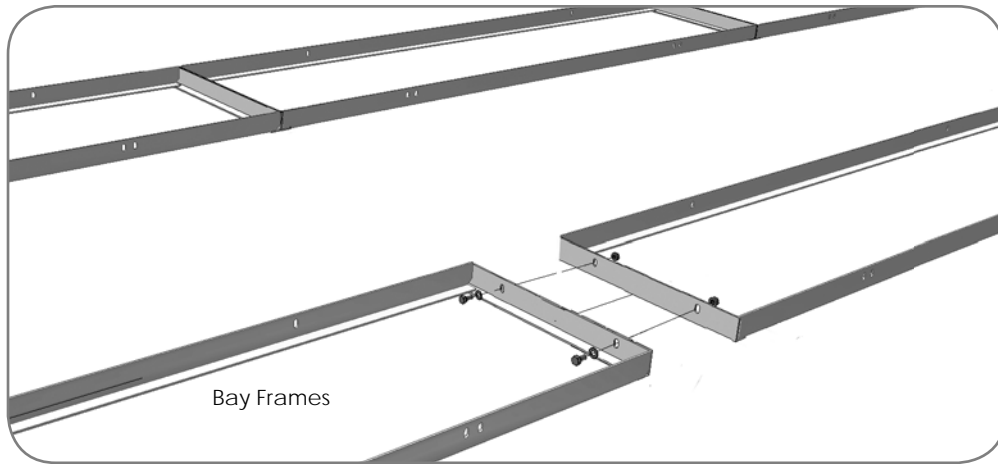
- 1 **Bay frame** – Module mounting frame for all modules south of north most row. 6105-T5 aluminum extrusion.
- 2 **Module bracket** – (No. 10 x 3/4”) – Used to secure module to bay frame. 10° tilt angle. 6105-T5 aluminum extrusion. Integral PEM nuts for quick assembly
- 3 **Hex Bolt** (1/4” x 3/4”) – Use with all components of RapidRac™. 304 stainless steel.
- 4 **Flat Washer** (5/16”) – Use with all components of RapidRac™. 304 stainless steel.
- 5 **Serrated Flange nut** (1/4”) – Use one per hex bolt and washer during assembly. 302 stainless steel. Required torque: 5 foot-pounds.
- 6 **WEEB 9.5** – Use with hex bolt and washer during assembly on frame holes facing in towards the array. 302 stainless steel.



[3.] Assembly

Step 1

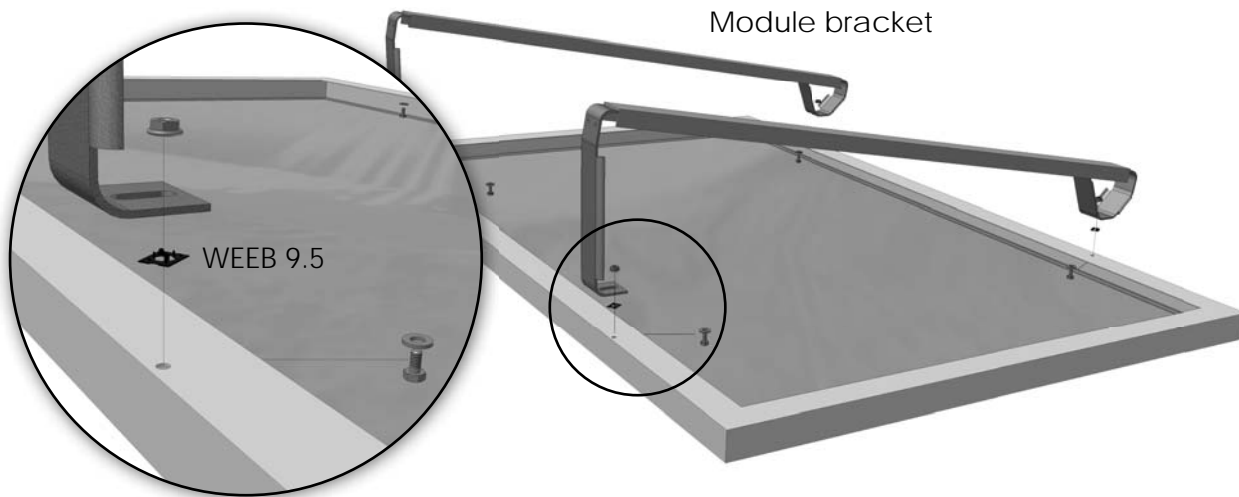
Lay bay frames on roof where array will be installed. Connect bay frames using using bolts, washers and flange nuts. Consult page 16 of this manual for proper uses of WEEB 9.5



Step 2

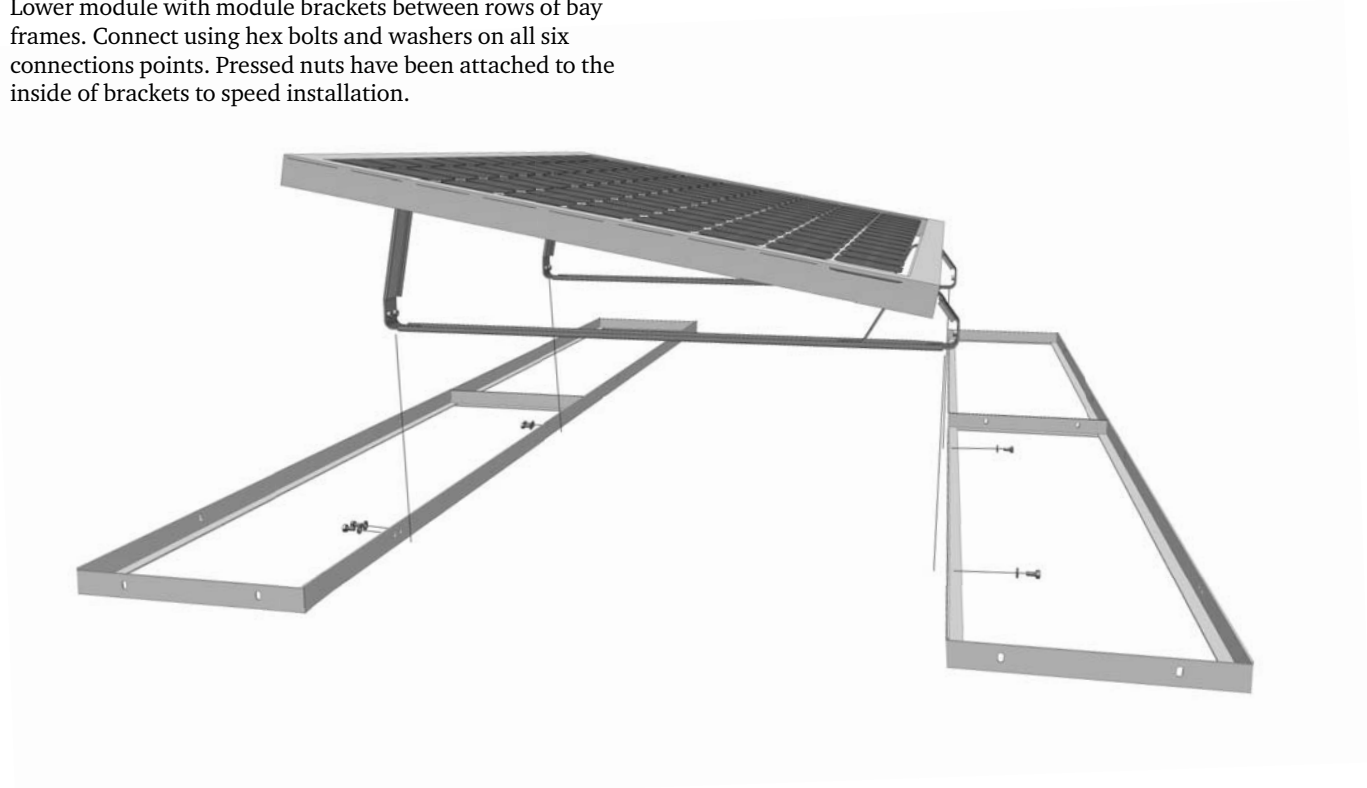
Attach 2 module brackets to each module using hex bolts, washers and flange nuts on all four connections points, using WEEB 9.5 on frame holes facing in towards the array.

Note: Make sure to use a piece of cardboard to protect the module from the surface of the roof.



Step 3

Lower module with module brackets between rows of bay frames. Connect using hex bolts and washers on all six connections points. Pressed nuts have been attached to the inside of brackets to speed installation.

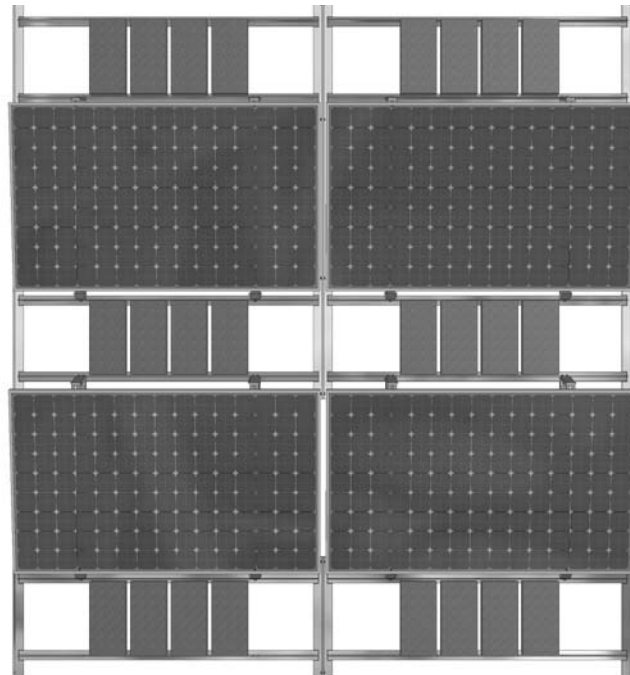


Step 4

Ballast requirements vary. Total amount of concrete blocks placed in frame depends on wind speed, exposure, building height and module dimensions.

Parts provided by installer:

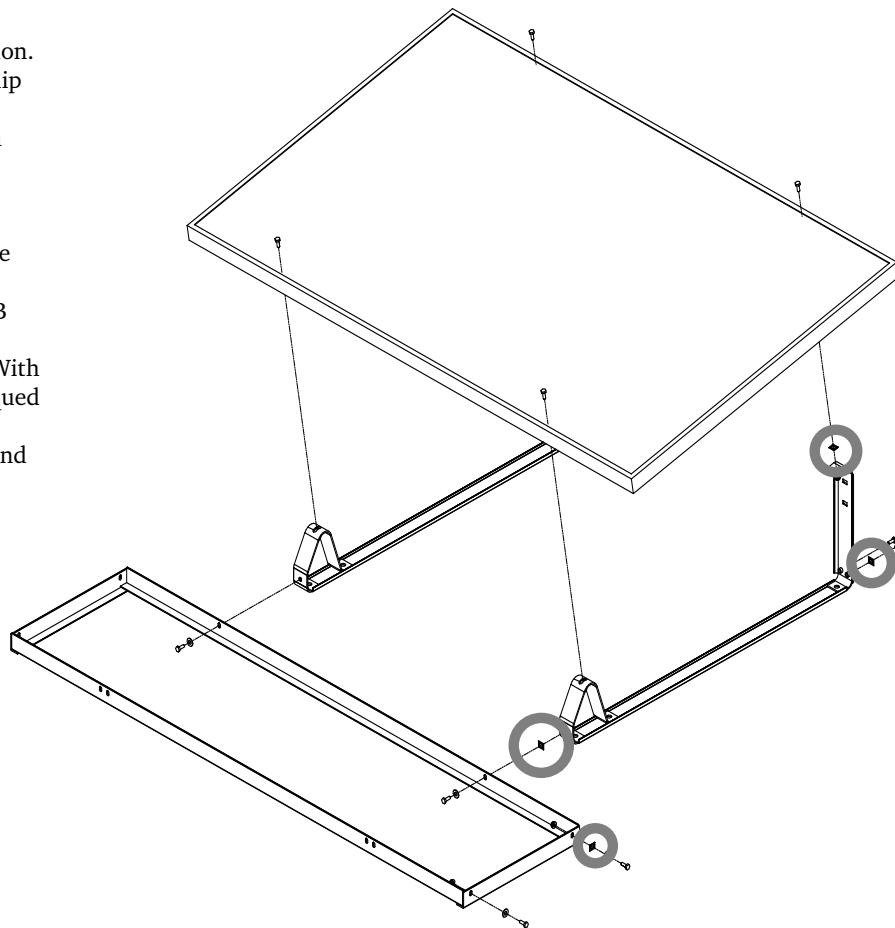
Solid Cap Concrete Blocks
(4" x 8" x 16"), 26 lbs.



Note: Unirac requires that all perimeter ballast blocks be adhered to the bay with Builder's Choice Subfloor and Construction adhesive (BC-490 or equal).

WEEB 9.5 Grounding

RapidRac is sold with a grounding solution. UniRac utilizes a WEEB 9.5 grounding clip to ground the modules to the RapidRac frame, and the individual clips frames to each other. The WEEB 9.5 clips are inserted into the RapidRac frame holes with the prongs facing in towards the rack. The module is then placed down on top of the clips and the fastener is used to secure the module to the bracket frames. WEEB 9.5's are also inserted into the holes that interconnect the bay frames as shown. With all WEEB's in place and all fasteners torqued appropriately, the entire array and all modules are grounded and a single ground can be run for the array as appropriate building code requirements.



10 year limited Product Warranty, 5 year limited Finish Warranty

Unirac, Inc., warrants to the original purchaser ("Purchaser") of product(s) that it manufactures ("Product") at the original installation site that the Product shall be free from defects in material and workmanship for a period of ten (10) years, except for the anodized finish, which finish shall be free from visible peeling, or cracking or chalking under normal atmospheric conditions for a period of five (5) years, from the earlier of 1) the date the installation of the Product is completed, or 2) 30 days after the purchase of the Product by the original Purchaser ("Finish Warranty").

The Finish Warranty does not apply to any foreign residue deposited on the finish. All installations in corrosive atmospheric conditions are excluded. The Finish Warranty is VOID if the practices

specified by AAMA 609 & 610-02 – "Cleaning and Maintenance for Architecturally Finished Aluminum" (www.aamanet.org) are not followed by Purchaser. This Warranty does not cover damage to the Product that occurs during its shipment, storage, or installation.

This Warranty shall be VOID if installation of the Product is not performed in accordance with Unirac's written installation instructions, or if the Product has been modified, repaired, or reworked in a manner not previously authorized by Unirac IN WRITING, or if the Product is installed in an environment for which it was not designed. Unirac shall not be liable for consequential, contingent or incidental damages arising out of the use of the Product by Purchaser under any circumstances.

If within the specified Warranty periods the Product shall be reasonably proven to be defective, then Unirac shall repair or replace the defective Product, or any part thereof, in Unirac's sole discretion. Such repair or replacement shall completely satisfy and discharge all of Unirac's liability with respect to this limited Warranty. Under no circumstances shall Unirac be liable for special, indirect or consequential damages arising out of or related to use by Purchaser of the Product.

Manufacturers of related items, such as PV modules and flashings, may provide written warranties of their own. Unirac's limited Warranty covers only its Product, and not any related items.